



PRESENTATION AT

"KANSAS EPSCoR CONFERENCE"

**Dr. Sherry O. Farwell
Head of NSF EPSCoR Office
April 25, 2006**



INTRODUCTION

"It is my desire to violate the custom of most Washington, DC speakers and talk about something of which I have genuine interest and some degree of knowledge."

Norman R. Augustine, 1997





PRESENTATION TOPIC

"EPSCoR TS³ Partnerships"

WHERE:

*TS³ = Trajectory Toward Sustainable
Scientific Success*



NSF EPSCoR's MAJOR PARTNERS

- EPSCoR OFFICE HEAD & STAFF
- NSF NON-EPSCoR PROGRAMS IN DIRECTORATES/OFFICES
- NSF LEADERSHIP IN OD, EHR, & OLPA
- JURISDICTIONS' EPSCoR PDs/PAs
- JURISDICTIONS' EPSCoR COMMITTEES
- JURISDICTIONS' SMET COMMUNITIES
- EPSCoR-LIKE PROGRAMS IN 6 OTHER AGENCIES
- EPSCoR & OTHER PRIVATE FOUNDATIONS
- U.S. CONGRESS & STAFF





National Science Foundation
WHERE DISCOVERIES BEGIN

- Dr. Arden L. Bement, Jr.
- Director
- National Science Foundation



NSF BUDGET SUMMARY (Dollars in Millions)

	FY 2005	FY 2006	FY 2007 Request	Change Over FY 2006
NSF	\$5,481	\$5,581	\$6,020	7.9%
R&RA	\$4,221	\$4,331	\$4,666	7.7%
EHR	\$844	\$797	\$816	2.5%
EPSCoR	\$93.4	\$98.7	\$100	1.3%





EPSCoR OBJECTIVES

- To Catalyze Key Research Themes and Related Activities Within & Between EPSCoR jurisdictions that Empower Knowledge Generation, Dissemination, and Application
- To Activate Effective Jurisdictional and Regional Collaborations Among Academic, Government, and Private Sector Stakeholders that Advance Scientific Research, Promote Innovation, and Provide Multiple Societal Benefits
- To Broaden Participation in Science & Engineering by Institutions, Organizations, and People Within & Between EPSCoR Jurisdictions
- To Use EPSCoR for Development, Implementation, and Evaluation of Future Programmatic Experiments that Motivate Positive Change and Progression



EPSCoR's PRESENT PORTFOLIO

- **Research Infrastructure Improvement Grants** – 36-48 month awards of up to \$9.0 million to support infrastructure improvements critical for building R&D capacity in priority research areas
- **Co-Funding** – Joint support of proposals submitted by EPSCoR researchers to NSF's regular grant programs.
- **Outreach/Technical Assistance** – Support workshops and visits by NSF program/professional staff to acquaint EPSCoR research communities with NSF programs, priorities, policies & people.





EPSCoR Co-Funding History

- During FY 1998-2005, EPSCoR co-funded ~1,700 regular NSF research and education awards.
- EPSCoR provided ~ \$230M of the ~ \$532M total for these awards.
- During FY 1998-2005, co-funding has positively impacted EPSCoR jurisdictions' proposal average success rates by ~5%.



PROPOSAL STATISTICS

	FY-99	FY-00	FY-01	FY-02	FY-03	FY-04	FY-05
NSF	28,558	29,489	31,917	35,130	40,131	43,836	41,749
EPSCoR	4,680	4,750	5,180	5,597	6,418	6,818	6,805

Overall % Increase From FY-99 Baseline:

NSF = 46%

EPSCoR = 45%



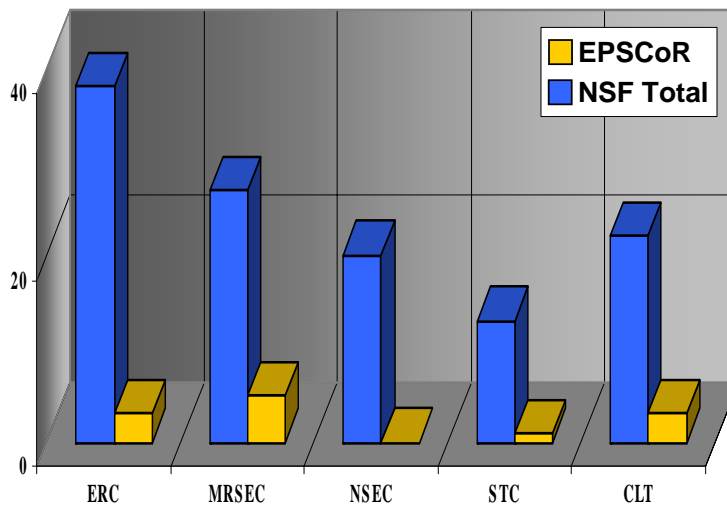


EPSCoR CO-FUNDING: KS

Year	Proposals Co-Funded	EPSCoR Funds	Total Awards
2004	19	\$3,539,255	\$5,250,010
2005	16	\$1,350,235	\$3,736,542
2006	5	\$775,195	\$1,553,424



EXAMPLES OF EPSCoR'S PARTICIPATION IN ACTIVE CENTER-LIKE AWARDS





A THOUGHT-PROVOKING QUOTE

“The Art Of Leadership Is To Align The System’s Strengths And Thereby Make The System’s Weaknesses Irrelevant.”

Peter Drucker



PROPOSED STRENGTH-BASED RESEARCH COLLABORATIVE PROGRAM

- SBRC Characteristics
 - Utilizes Entire Gamut of Jurisdiction’s Talent & Infrastructure for Thematic Research
 - Expands Talent & Infrastructure Base Via Intra/Inter-Jurisdiction Partnerships
 - Uses Cyber-Infrastructure & ACCESS-GRID
 - Integrates R&E with Innovation
 - “Graduates” Because of Defined Duration for EPSCoR Funding





SBRC DESIGN CONCEPT

SBRC EMPHASIZES “CAPABILITY ENHANCEMENT”

1. **Complementary To RII (Capacity-Building)**
2. **Catalyze Formation Of Quality Research Collaborations & Collaboratories**
3. **Develop Competitiveness In Selected Theme That Addresses Scientific Challenge Of Regional Relevance & National Importance**
4. **Help Change “Brain Drain” To “Brain Gain”**

Bottom Line:

Capacity + Capability = Competitiveness



EXAMPLES OF POTENTIAL SBRC OUTCOMES

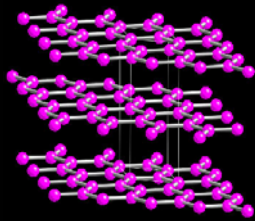
- Emergence Of New Strength-Based S&E Areas Led By High Performance Talent In EPSCoR Jurisdictions
- Development Of Transferable Models For Innovative, Cyber-Enabled S&E
- Enhanced Opportunities For Recruiting, Training, And Retaining Faculty/Students In S&E
- Greater Capacity And Enthusiasm For Innovation, Entrepreneurship, and TBED In EPSCoR Regions



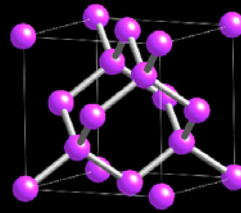
POSITIVE TRANSFORMATION



Focus
Collaboration



Strength



Graphite

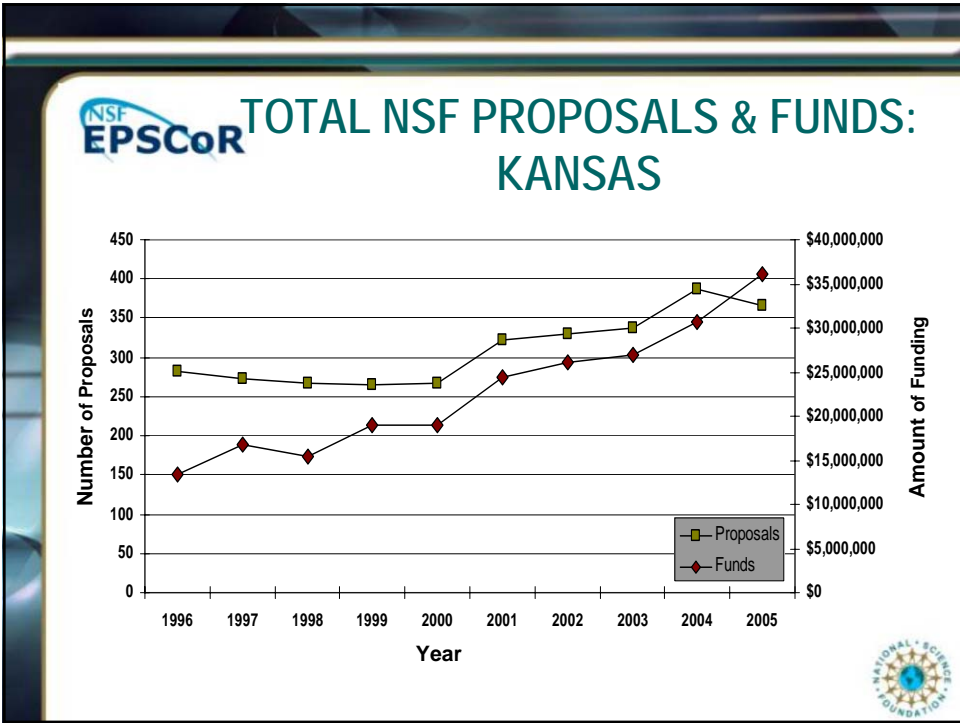
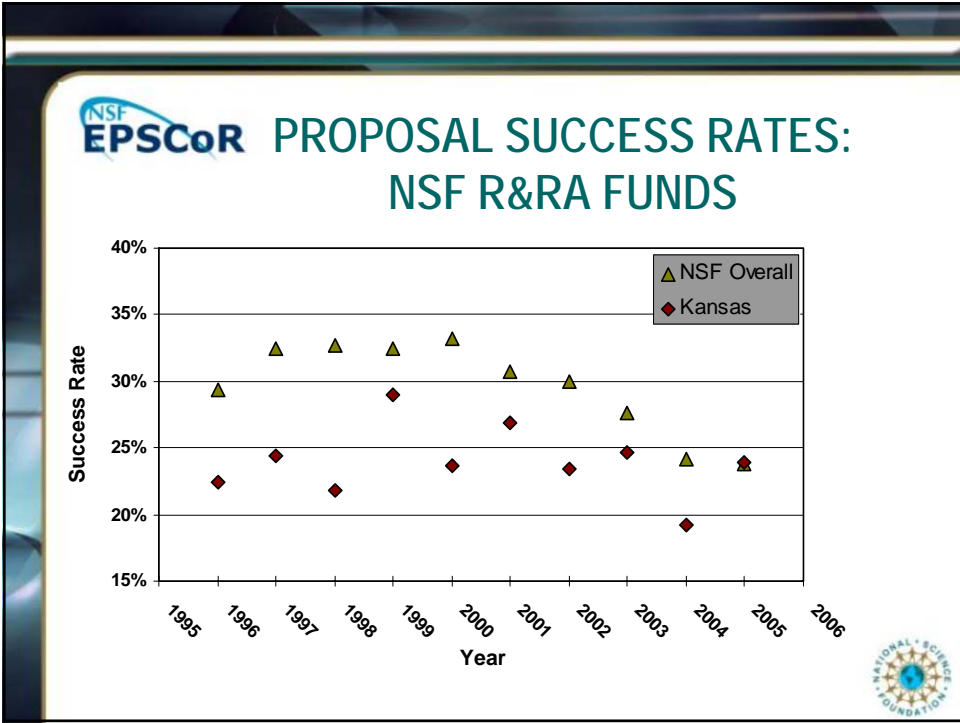
Diamond

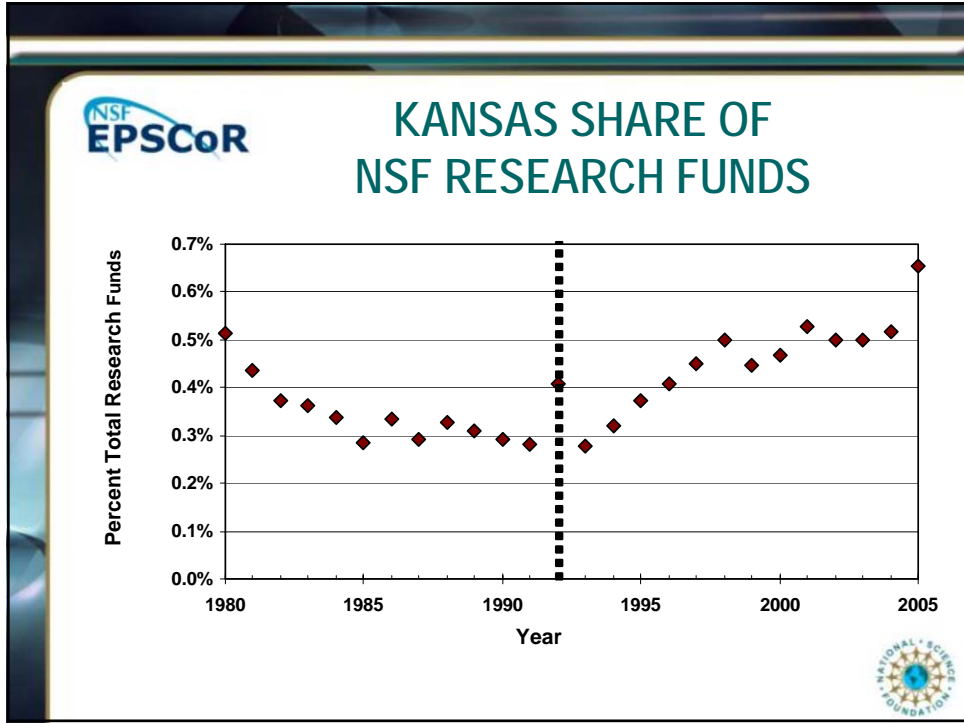


MY CONCLUSION

***“You Are In Good Hands With
Leadership Of Kansas EPSCoR!”***







NSF EPSCoR

MY WISH FOR KS EPSCoR

“EPSCoR PARTICIPANTS FURTHER UTILIZE HIGH-LEVEL COLLABORATIVE PARTNERSHIPS IN YOUR STRATEGIES FOR ENHANCED COMPETITIVENESS AND PROGRESSION.”